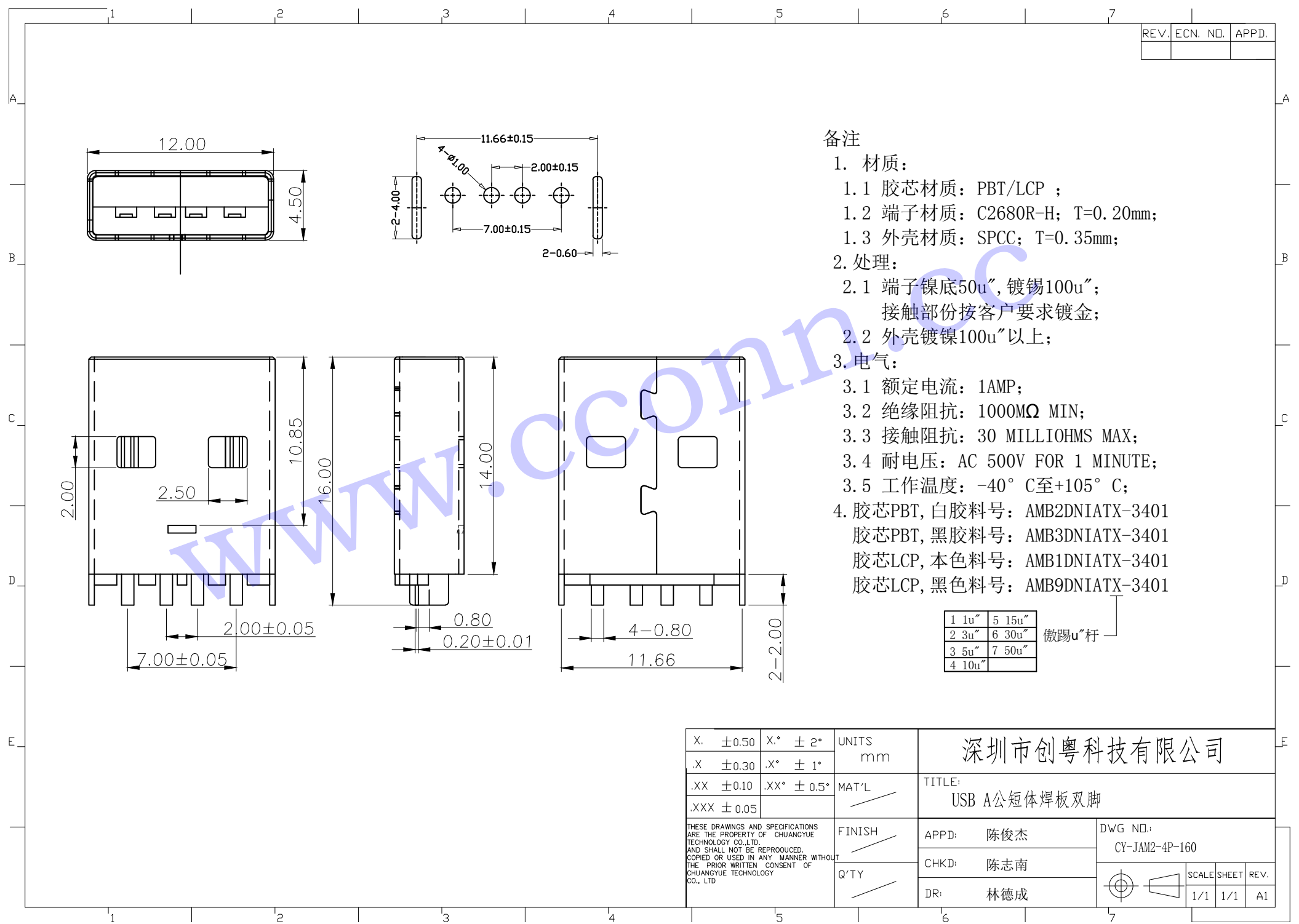


REV.	ECN. NO.	APPD.



备注

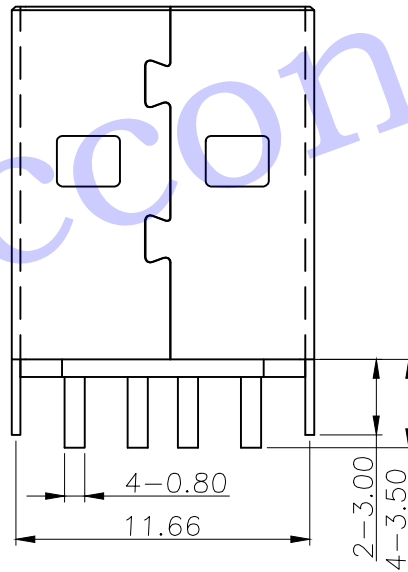
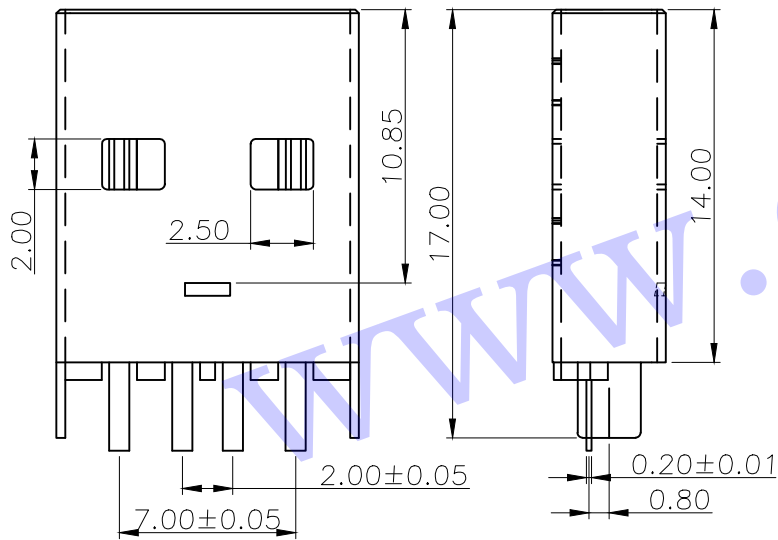
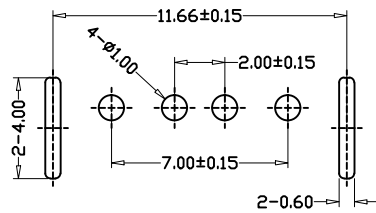
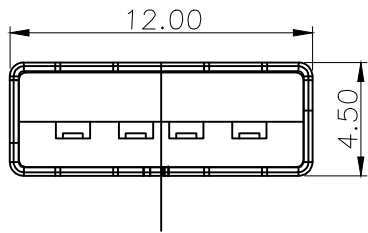
1. 材质:
 - 1.1 胶芯材质: PBT/LCP ;
 - 1.2 端子材质: C2680R-H; T=0.20mm;
 - 1.3 外壳材质: SPCC; T=0.35mm;
2. 处理:
 - 2.1 端子镍底50u", 镀锡100u";
接触部份按客户要求镀金;
 - 2.2 外壳镀镍100u"以上;
3. 电气:
 - 3.1 额定电流: 1AMP;
 - 3.2 绝缘阻抗: 1000MΩ MIN;
 - 3.3 接触阻抗: 30 MILLIOHMS MAX;
 - 3.4 耐电压: AC 500V FOR 1 MINUTE;
 - 3.5 工作温度: -40° C至+105° C;
4. 胶芯PBT, 白胶料号: AMB2DNIATX-3401
胶芯PBT, 黑胶料号: AMB3DNIATX-3401
胶芯LCP, 本色料号: AMB1DNIATX-3401
胶芯LCP, 黑色料号: AMB9DNIATX-3401

1 1u"	5 15u"
2 3u"	6 30u"
3 5u"	7 50u"
4 10u"	

微踢u"杆

X. ±0.50	X.° ± 2°	UNITS mm	深圳市创粤科技有限公司		
.X ±0.30	.X° ± 1°		TITLE: USB A公短体焊板双脚		
.XX ±0.10	.XX° ± 0.5°	MAT'L	APPD: 陈俊杰	DWG NO.:	
.XXX ±0.05			CHKD: 陈志南	CY-JAM2-4P-160	
THESE DRAWINGS AND SPECIFICATIONS ARE THE PROPERTY OF CHUANGYUE TECHNOLOGY CO.,LTD. AND SHALL NOT BE REPRODUCED, COPIED OR USED IN ANY MANNER WITHOUT THE PRIOR WRITTEN CONSENT OF CHUANGYUE TECHNOLOGY CO., LTD.		FINISH	DR: 林德成	SCALE SHEET REV.	1/1 1/1 A1
		Q'TY			

REV.	ECN. NO.	APPD.



备注

1. 材质:
 - 1.1 胶芯材质: PBT/LCP ;
 - 1.2 端子材质: C2680R-H; T=0.20mm;
 - 1.3 外壳材质: SPCC; T=0.35mm;
2. 处理:
 - 2.1 端子镍底50u", 镀锡100u";
接触部份按客户要求镀金;
 - 2.2 外壳镀镍100u"以上;
3. 电气:
 - 3.1 额定电流: 1AMP;
 - 3.2 绝缘阻抗: 1000MΩ MIN;
 - 3.3 接触阻抗: 30 MILLIOHMS MAX;
 - 3.4 耐电压: AC 500V FOR 1 MINUTE;
 - 3.5 工作温度: -40° C至+105° C;
4. 胶芯PBT, 白胶料号: AMB2DNIATX-3401
胶芯PBT, 黑胶料号: AMB3DNIATX-3401
胶芯LCP, 本色料号: AMB1DNIATX-3401
胶芯LCP, 黑色料号: AMB9DNIATX-3401

1 1u"	5 15u"
2 3u"	6 30u"
3 5u"	7 50u"
4 10u"	

傲錫u"杆

X. ±0.50	X.° ± 2°	UNITS	深圳市创粤科技有限公司
.X ±0.30	.X° ± 1°	mm	
.XX ±0.10	.XX° ± 0.5°	MAT'L	TITLE: USB A公短体焊板双脚_加长1.0
.XXX ± 0.05			
<small>THESE DRAWINGS AND SPECIFICATIONS ARE THE PROPERTY OF CHUANGYUE TECHNOLOGY CO.,LTD. AND SHALL NOT BE REPRODUCED, COPIED OR USED IN ANY MANNER WITHOUT THE PRIOR WRITTEN CONSENT OF CHUANGYUE TECHNOLOGY CO., LTD.</small>			APPD: 陈俊杰
			CHKD: 陈志南
			DR: 林德成
FINISH			DWG NO.:
Q'TY			CY-JAM2-4P-160
			SCALE SHEET REV.
			1/1 1/1 A1