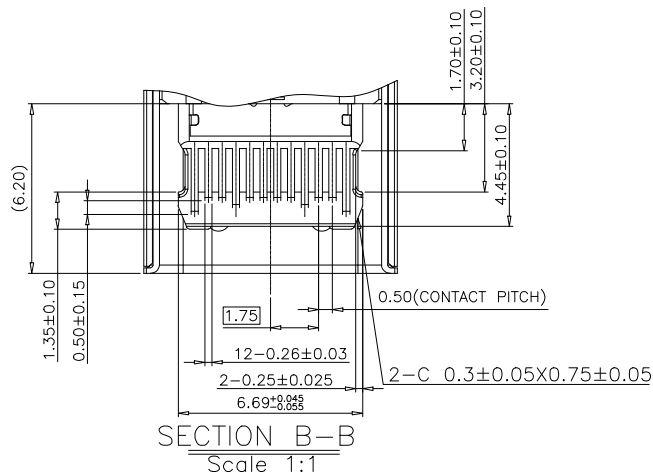
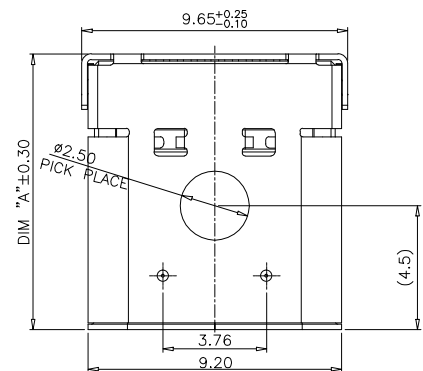


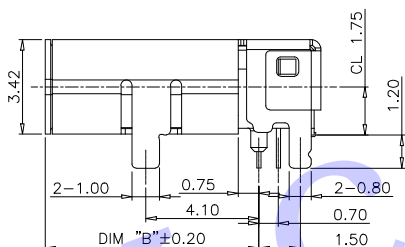
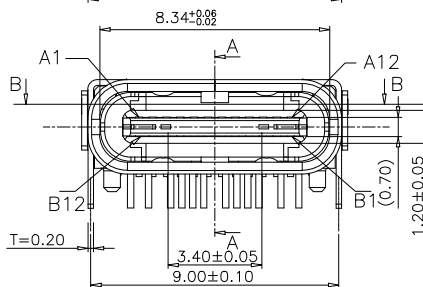


RoHS Compliant

REV.	ZONE	DESCRIPTION	DESIGN	DATE
B		NEW		

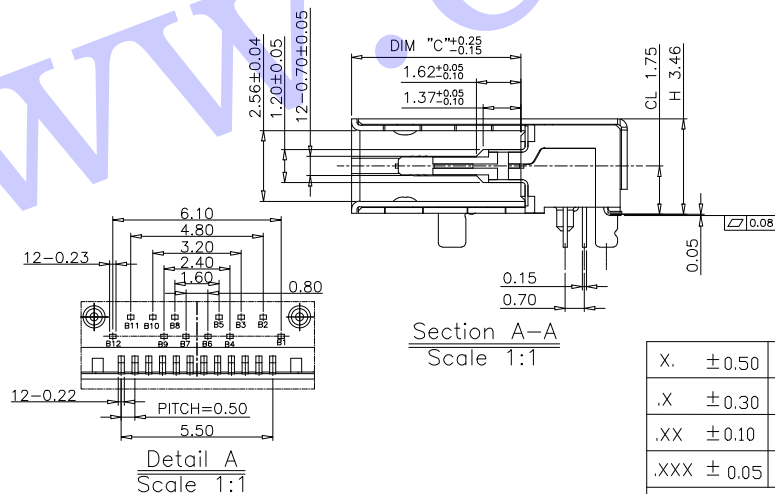
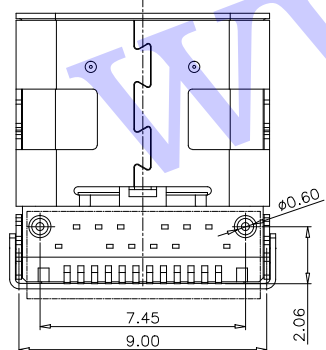


- 1.MATERIAL:
 MOLDING: LCP UL94 V-0
 CONTACT: COPPER ALLOY.
 GOLD PLATED ON CONTACT AREA, 100u"
 Min TIN (LEAD FREE) ON SOLDER AREA,
 SHELL: SUS304-H,T=0.30±0.03mm
 50u" NICKEL PLATING OVER ALL.
 SHILD: SUS304-H,T=0.12±0.03mm
- 2.MECHANICAL:
 INSERTION: 5~20N.
 EXTRACTION: 8~20N.
 DURABILITY: 5000 CYCLES
- 3.ELECTRICAL:
 CURRENT: 3A MIN FOR VBUS;



- VOLTAGE: 5VAC MAX
 WITHSTANDING VOLTAGE: 100V AC.
 CONTACT RESISTANCE: 40mΩ MAX.
 INSULATION RESISTANCE: 100MΩ MIN.
4. ENVIRONMENTAL
 TEMPERATURE RANGE -55°C ~ +85°C

NO	DIM A	DIM B	DIM C
1	10.0	7.75	6.2
2	8.65	6.4	4.85
3	--	--	--



Section A-A
Scale 1:1

X.	±0.50	X.*	± 2°	UNITS	mm
.X	±0.30	.X*	± 1°		
.XX	±0.10	.XX*	± 0.5°		
.XXX	± 0.05			MAT'L	
				FINISH	
				Q'TY	

深圳市创粤科技有限公司

TITLE:
USB 3.1 TYPE-C 24PIN板上双外壳DIP+SMT母座

APPD: _____

CHKD: _____

DR: _____

DWG NO: _____

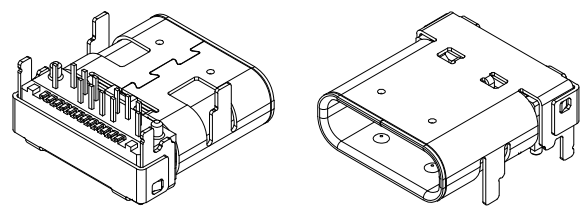
SCALE	SHEET	REV.
1/1	1/1	A1

THESE DRAWINGS AND SPECIFICATIONS ARE THE PROPERTY OF SHENZHEN CHUANGYUE TECHNOLOGY CO.,LTD. AND SHALL NOT BE REPRODUCED, COPIED OR USED IN ANY MANNER WITHOUT THE PRIOR WRITTEN CONSENT OF SHENZHEN CHUANGYUE TECHNOLOGY CO., LTD



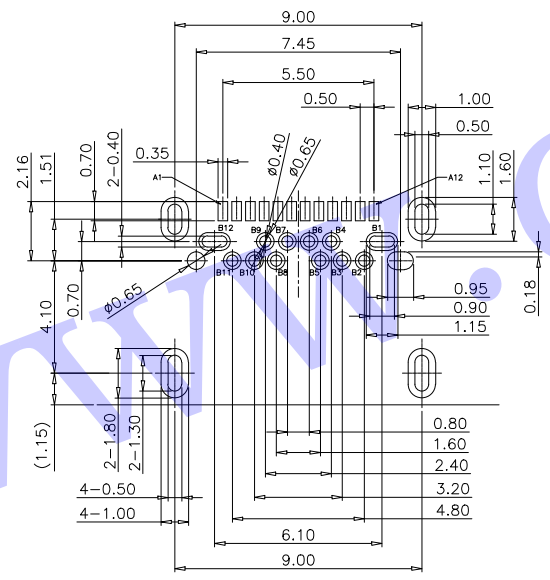
RoHS Compliant

REV.	ZONE	DESCRIPTION	DESIGN	DATE
B		NEW		



USB TYPE-C FULL-FEATURED RECEPTACLE INTERFACE PIN ASSIGNMENTS

PIN	Signal Name	Description	PIN	Signal Name	Description
A1	GND	Ground return	B12	GND	Ground return
A2	SSTXp1	Positive half of first SuperSpeed TX differential pair	B11	SSRXp1	Positive half of first SuperSpeed RX differential pair
A3	SSTXn1	Negative half of first SuperSpeed TX differential pair	B10	SSRXn1	Negative half of first SuperSpeed RX differential pair
A4	VBUS	Bus Power	B9	VBUS	Bus Power
A5	CC1	Configuration Channel	B8	SBU2	Sideband Use (SBU)
A6	Dp1	Positive half of the USB 2.0 differential pair-Position 1	B7	Dn2	Negative half of the USB 2.0 differential pair-Position 2
A7	Dn1	Negative half of the USB 2.0 differential pair-Position 1	B6	Dp2	Positive half of the USB 2.0 differential pair-Position 2
A8	SBU1	Sideband Use (SBU)	B5	CC2	Configuration Channel
A9	VBUS	Bus Power	B4	VBUS	Bus Power
A10	SSRXn2	Negative half of second SuperSpeed RX differential pair	B3	SSTXn2	Negative half of second SuperSpeed TX differential pair
A11	SSRXp2	Positive half of second SuperSpeed RX differential pair	B2	SSTXp2	Positive half of second SuperSpeed TX differential pair
A12	GND	Ground return	B1	GND	Ground return



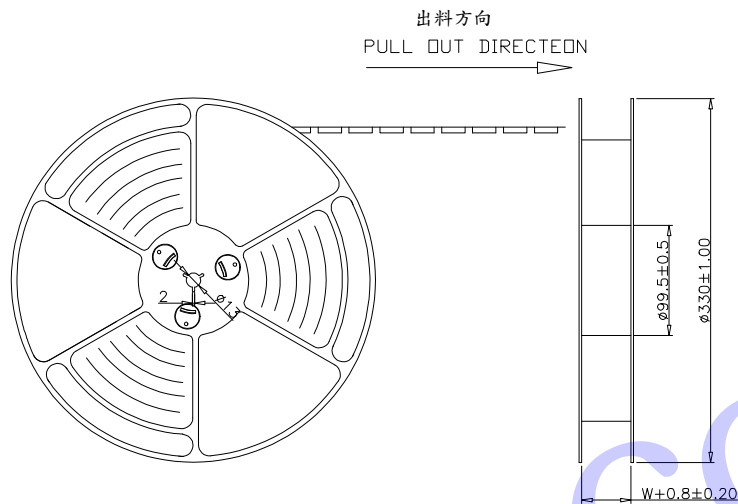
RECOMMEND P.C.B LAYOUT (COMPONENT SIDE)
 TOLERANCE FOR PCB LAYOUT IS ± 0.05

X. ± 0.50	X.* ± 2°	UNITS mm	深圳市创粤科技有限公司						
.X ± 0.30	.X* ± 1°								
.XX ± 0.10	.XX* ± 0.5°	MAT'L	TITLE: USB 3.1 TYPE-C 24PIN板上双外壳DIP+SMT母座						
.XXX ± 0.05		FINISH	APPD:						
THESE DRAWINGS AND SPECIFICATIONS ARE THE PROPERTY OF SHENZHEN CHUANGYUE TECHNOLOGY CO.,LTD. AND SHALL NOT BE REPRODUCED, COPIED OR USED IN ANY MANNER WITHOUT THE PRIOR WRITTEN CONSENT OF SHENZHEN CHUANGYUE TECHNOLOGY CO., LTD.		Q'TY	CHKD:						
			DR:						
		DWG NO.:							
		<table border="1"> <tr> <td>SCALE</td> <td>SHEET</td> <td>REV.</td> </tr> <tr> <td>1/1</td> <td>1/1</td> <td>A1</td> </tr> </table>		SCALE	SHEET	REV.	1/1	1/1	A1
SCALE	SHEET	REV.							
1/1	1/1	A1							



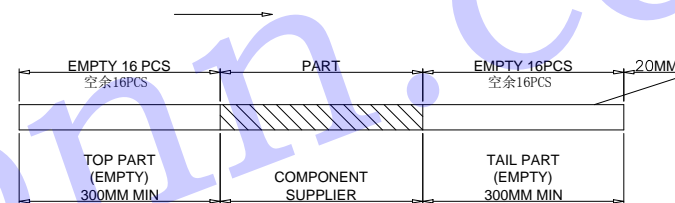
RoHS Compliant

REV.	ZONE	DESCRIPTION	DESIGN	DATE
B		NEW		

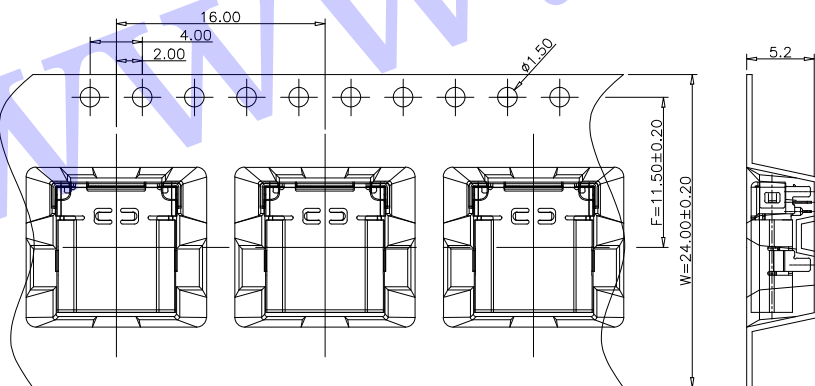


NOTES

1. 帶子引導長度
LEAD TAPE LENGTH
出料方向
PULL OUT DIRECTION



2. 出貨運輸過程中一定注意：
THIS REQUIREMENT SHOULD BE APPLIED AT SHIPMENT：
卷帶在運輸過程中不能散開
PEELING OFF SHOULD NOT BE ALLOWED DURING TRANSPORTATION

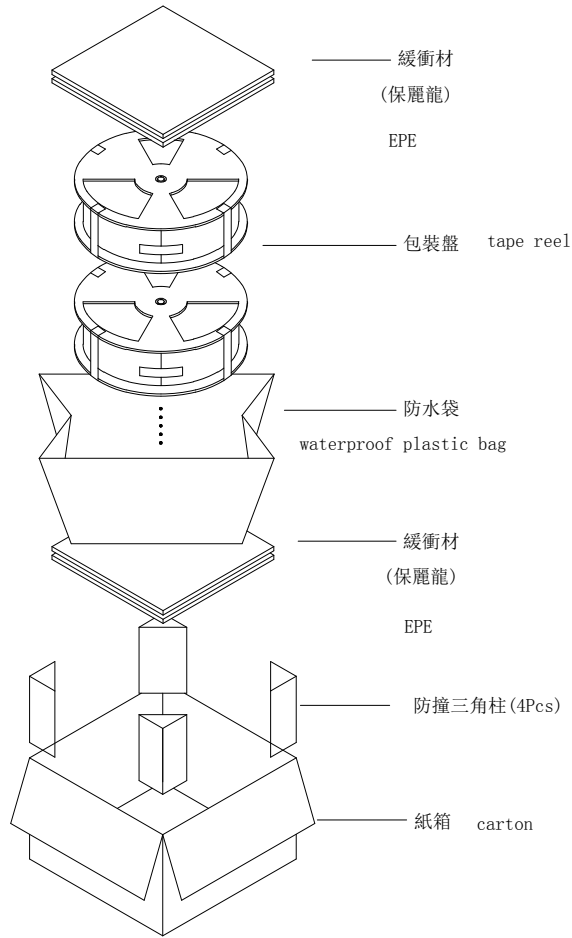


X. ± 0.50	X.* $\pm 2^\circ$	UNITS mm	深圳市创粤科技有限公司			
.X ± 0.30	.X* $\pm 1^\circ$		TITLE: USB 3.1 TYPE-C 24PIN板上双外壳DIP+SMT母座			
.XX ± 0.10	.XX* $\pm 0.5^\circ$	MAT'L	DWG NO:			
.XXX ± 0.05			APPD:			
THESE DRAWINGS AND SPECIFICATIONS ARE THE PROPERTY OF SHENZHEN CHUANGYUE TECHNOLOGY CO.,LTD. AND SHALL NOT BE REPRODUCED, COPIED OR USED IN ANY MANNER WITHOUT THE PRIOR WRITTEN CONSENT OF SHENZHEN CHUANGYUE TECHNOLOGY CO., LTD			FINISH		CHKD:	
			Q'TY			DR:
				1/1	1/1	A1

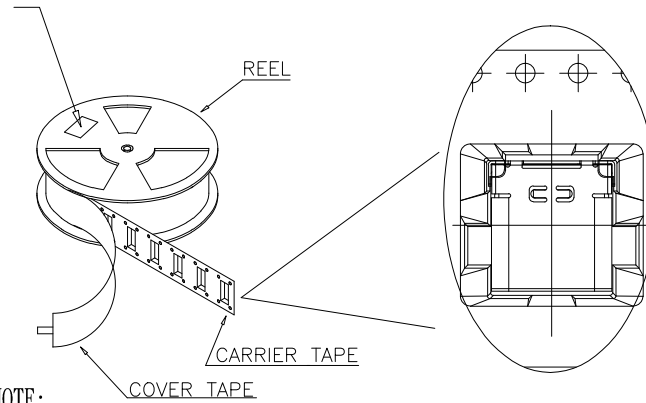


RoHS Compliant

REV.	ZONE	DESCRIPTION	DESIGN	DATE
B		NEW		



at small positioning hole of the carrier tape side).
 標籤黏貼處 (朝捲裝包材的小定位孔一側)
 Location of label sticking (label)



NOTE:

1. 每捲包裝數量及每箱裝箱數量如左下表格.
Packing q'ty of each reel & carton as below table shown.
2. 以上膠帶覆蓋下包裝帶經包裝機熱熔包裝
Use cover tape to cover and hot melt machine to seal up.
3. 每個紙箱放2個珍珠棉
Every carton use 2pcs EPE.
4. 將裝滿產品的卷盤放入紙箱并以膠帶封口
Put reels in the carton and use adhesive tape to seal up.

產品料號 (PRODUCT No.)	包裝容量 (PACKING CAPACITY)			重量 WEIGHT (Kg)		
	PCS/REEL	REELS/CARTON	PCS/CARTON	N.W./PCS	N.W./BOX	G.W./BOX
	800	10	8000	0.704		

X. ±0.50	X.° ± 2°	UNITS mm	深圳市创粤科技有限公司		
.X ±0.30	.X° ± 1°				
.XX ±0.10	.XX° ± 0.5°	MAT'L	TITLE: USB 3.1 TYPE-C 24PIN板上双外壳DIP+SMT母座		
.XXX ± 0.05					
THESE DRAWINGS AND SPECIFICATIONS ARE THE PROPERTY OF SHENZHEN CHUANGYUE TECHNOLOGY CO.,LTD. AND SHALL NOT BE REPRODUCED, COPIED OR USED IN ANY MANNER WITHOUT THE PRIOR WRITTEN CONSENT OF SHENZHEN CHUANGYUE TECHNOLOGY CO., LTD		FINISH	APPD:	DWG NO.:	
		Q'TY	CHKD:	SCALE SHEET REV.	
			DR:	1/1 1/1 A1	