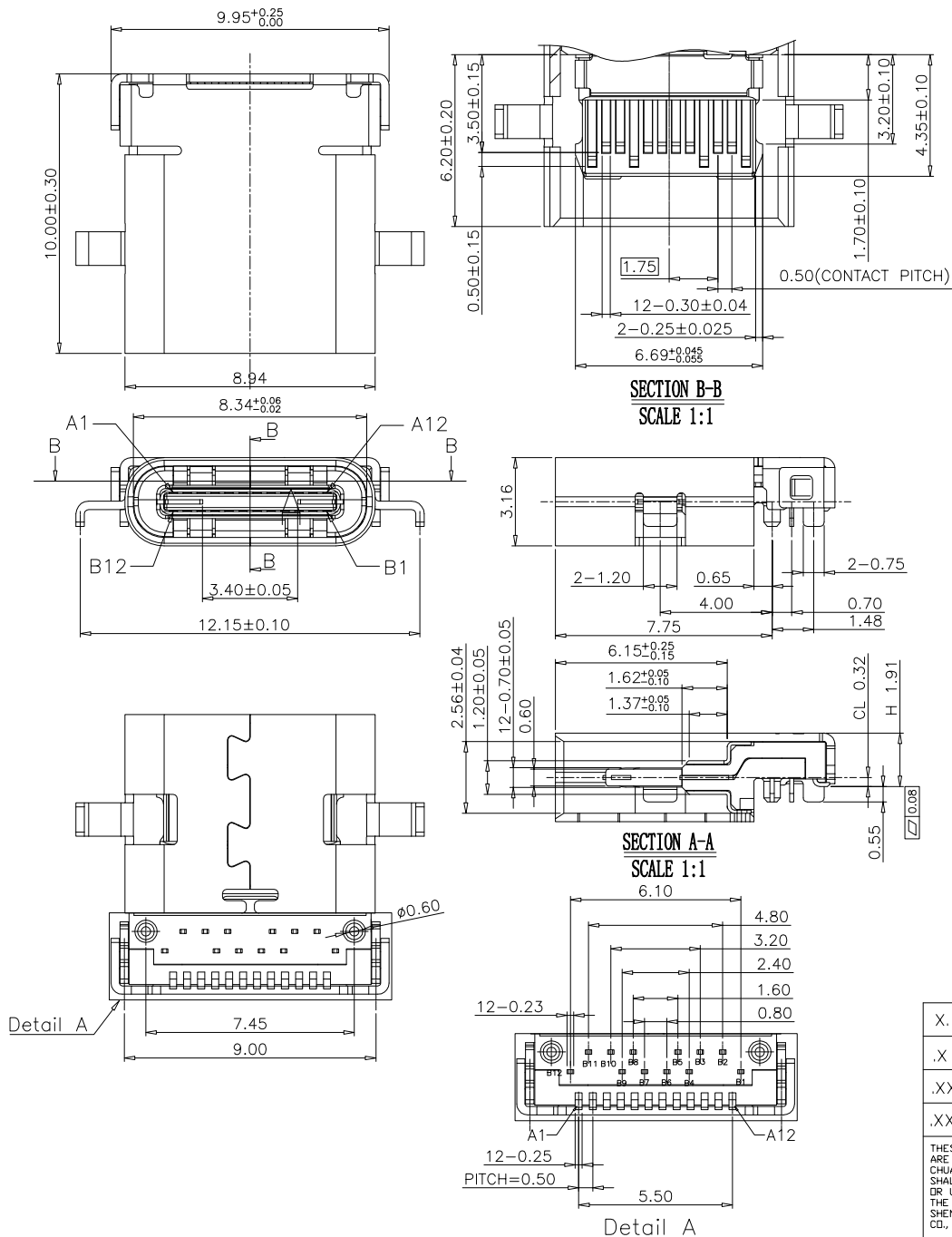




RoHS Compliant

REV.	ZONE	DESCRIPTION	DESIGN	DATE
B		NEW		



NOTES: 1.MATERIAL:

MOLDING: LCP UL94 V-0

CONTACT: COPPER ALLOY.

GOLD PLATED Min ON CONTACT AREA, 100u"
Min TIN (LEAD FREE) ON SOLDER AREA,

SHELL: SUS304-H,T=0.30±0.03mm

50u" NICKEL PLATING OVER ALL.

SHILD: SUS304-H,T=0.12±0.03mm

2.MECHANICAL:

INSERTION: 5~20N.

EXTRACTION: 8~20N.

DURABILITY: 10000 CYCLES

3.ELECTRICAL:

CURRENT: 5A MIN FOR VBUS;

0.25A MIN FOR OTHER.

VOLTAGE: 20 V MAX

WITHSTANDING VOLTAGE: 100V AC.

CONTACT RESISTANCE: 40mΩ MAX.

INSULATION RESISTANCE: 100MΩ MIN.

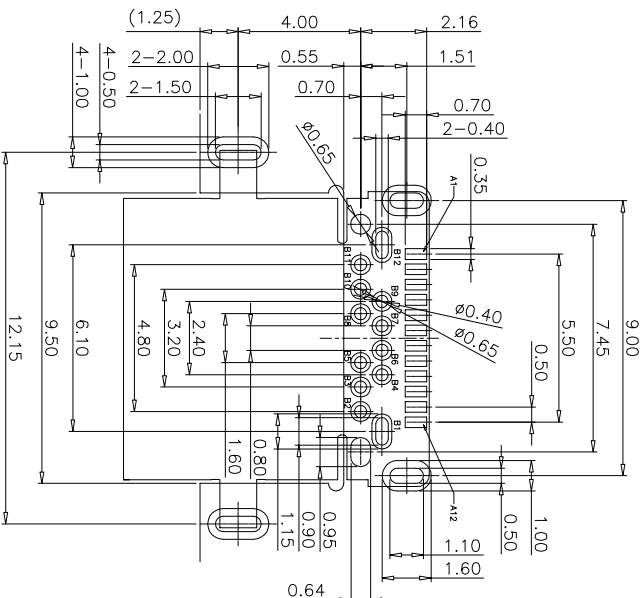
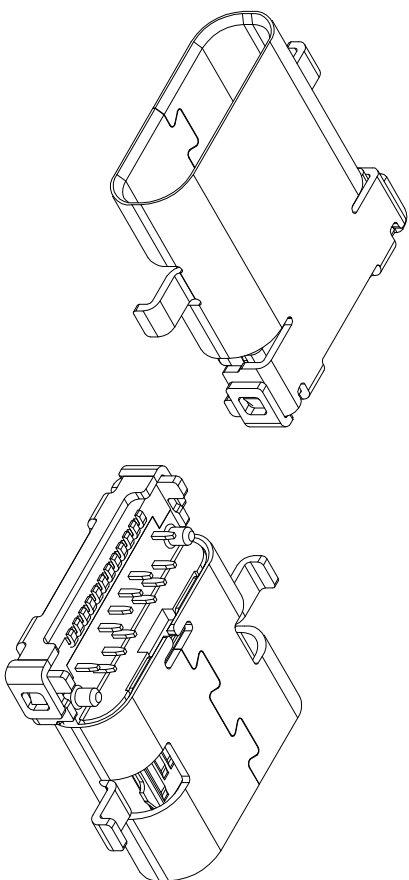
4.ENVIRONMENTAL

TEMPERATURE RANGE -55°C ~ +85°C

X. ±0.50	X.* ± 2°	UNITS	深圳市创粤科技有限公司				
.X ±0.30	.X* ± 1°	mm					
.XX ±0.10	.XX* ± 0.5°	MAT'L	TITLE:				
.XXX ± 0.05			TYPE-C 24P沉板DIP+SMT母座 L=10.0MM				
THESE DRAWINGS AND SPECIFICATIONS ARE THE PROPERTY OF SHENZHEN CHUANGYUE TECHNOLOGY CO.,LTD. AND SHALL NOT BE REPRODUCED, COPIED OR USED IN ANY MANNER WITHOUT THE PRIOR WRITTEN CONSENT OF SHENZHEN CHUANGYUE TECHNOLOGY CO., LTD			FINISH	APPD:	DWG NO:		
			Q'TY	CHKD:			
			DR:				
					SCALE	SHEET	REV.
					1/1	1/1	A1



RoHS Compliant



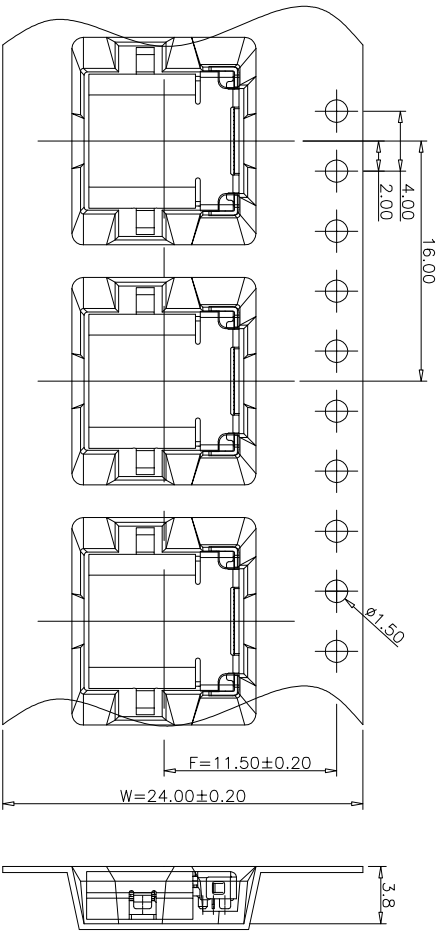
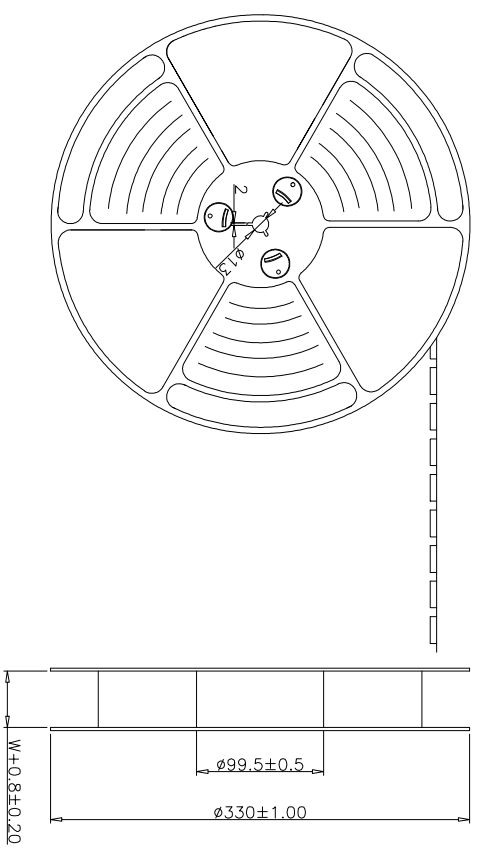
RECOMMEND P.C.B LAYOUT (COMPONENT SIDE)

TOLERANCE FOR PCB LAYOUT IS ± 0.05
KEEP OUT AREA

USB TYPE-C FULL-FEATURED RECEPTACLE INTERFACE PIN ASSIGNMENTS

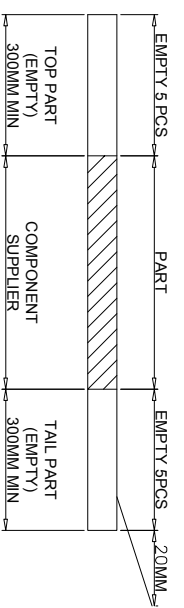
PIN	Signal Name	Description	PIN	Signal Name	Description
A1	GND	Ground return	B12	GND	Ground return
A2	SSTXp1	Positive half of first SuperSpeed TX differential pair	B11	SSRXp1	Positive half of first SuperSpeed RX differential pair
A3	SSTXn1	Negative half of first SuperSpeed TX differential pair	B10	SSRXn1	Negative half of first SuperSpeed RX differential pair
A4	Vbus	Bus Power	B9	Vbus	Bus Power
A5	CC1	Configuration Channel	B8	SBU2	Sideband Use (SBU)
A6	Dp1	Positive half of the USB 2.0 differential pair-Position 1	B7	Dn2	Negative half of the USB 2.0 differential pair-Position 2
A7	Dn1	Negative half of the USB 2.0 differential pair-Position 1	B6	Dp2	Positive half of the USB 2.0 differential pair-Position 2
A8	SBU1	Sideband Use (SBU)	B5	CC2	Configuration Channel
A9	Vbus	Bus Power	B4	Vbus	Bus Power
A10	SSRXn2	Negative half of second SuperSpeed RX differential pair	B3	SSTXn2	Negative half of second SuperSpeed TX differential pair
A11	SSRXp2	Positive half of second SuperSpeed RX differential pair	B2	SSTXp2	Positive half of second SuperSpeed TX differential pair
A12	GND	Ground return	B1	GND	Ground return

X.	±0.50	X.°	± 2°	UNITS		深圳市创粤科技有限公司 TYPE-C 24P 沉板DIP+SMT母座 L=10.0MM	DWG NO.:
X	±0.30	X°	± 1°	mm	FINISH		
XX	±0.10	XX°	± 0.5°		MATL		
XXX	± 0.05				Q'TY		
<small>THESE DRAWINGS AND SPECIFICATIONS ARE THE PROPERTY OF SHENZHEN CHANGQUE TECHNOLOGY CO.,LTD. AND SHALL NOT BE REPRODUCED, COPIED OR USED IN ANY MANNER WITHOUT THE WRITTEN PERMISSION OF SHENZHEN CHANGQUE TECHNOLOGY CO., LTD</small>							DR:
					APPD:	CHKD:	SCALE SHEET
					DR:		REV.
							AI

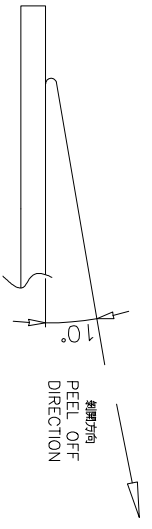


NOTES

- 1. 帶子引帶長度
LEAD TAPE LENGTH
- 出料方向
PULL OUT DIRECTION

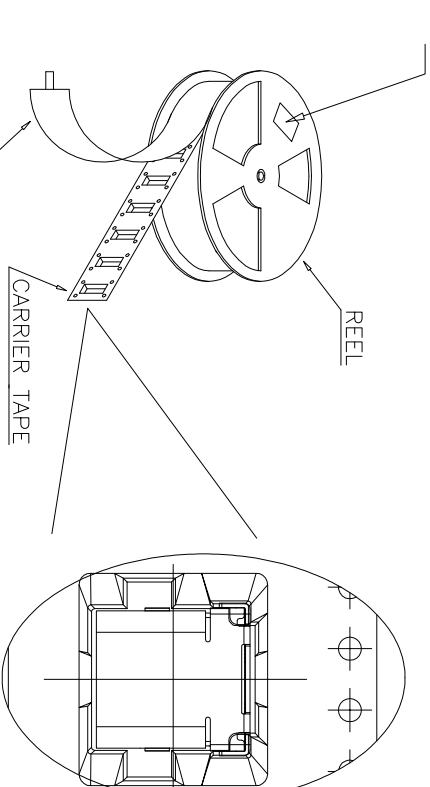
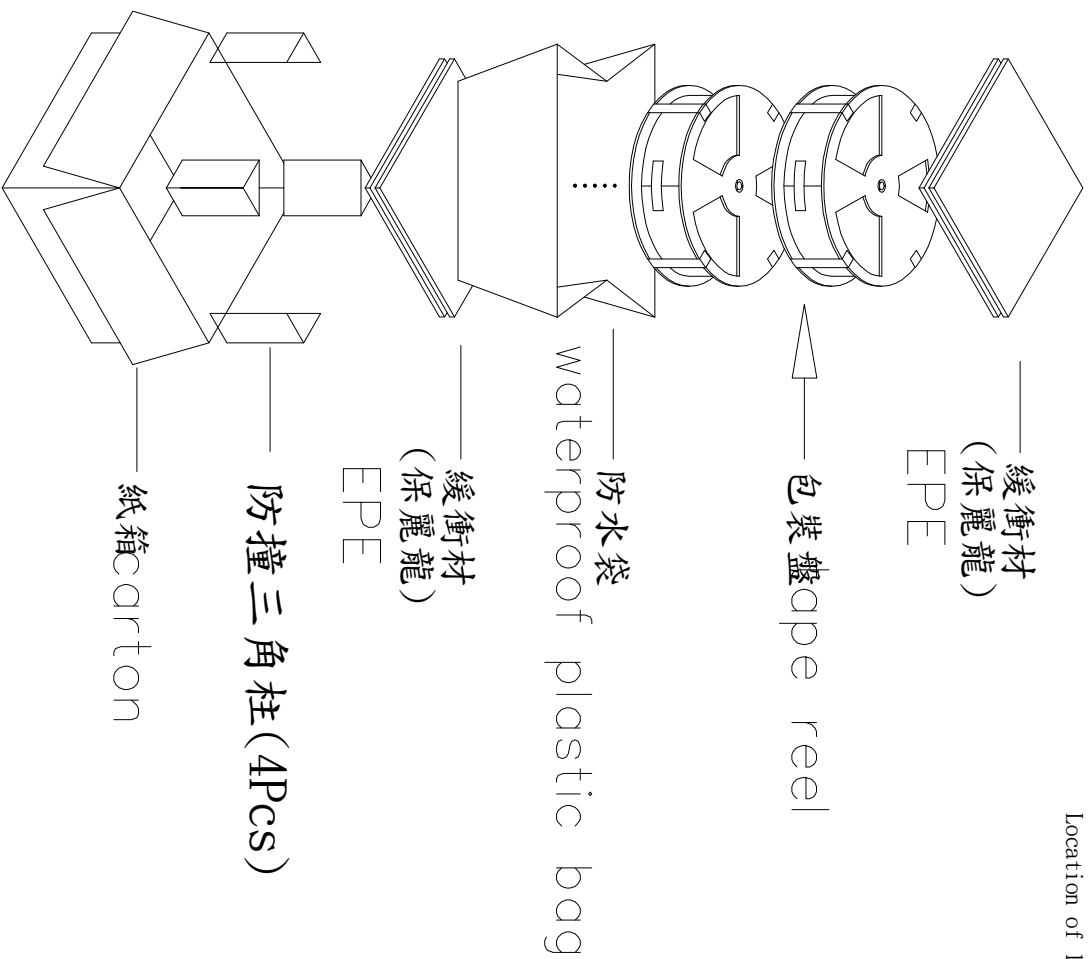


- 2. 上帶剝力力為：0.1~1.3N(10.2gf~130gf)
PEELING OFF FORCE OF TOP TAPE: 0.1~1.3N(10.2gf~130gf)
- 出貨運輸過程中一定注意：
THIS REQUIREMENT SHOULD BE APPLIED AT SHIPMENT：
卷帶在運輸過程中不能散開
PEELING OFF SHOULD NOT BE ALLOWED DURING TRANSPORTATION



X.	±0.50	X°	± 2°	UNITS		<p>深圳市创粤科技有限公司</p> <p>TYPE-C 24P沉板DIP+SMT母座 L=10.0MM</p>	FINISH	APPR:	DWG NO.:		SCALE	SHEET	REV.	
X	±0.30	.X°	± 1°	m/m			CHKD:				1/1	1/1	A1	
.XX	±0.10	.XX°	± 0.5°	MATL			QTY							
.XXX	± 0.05						DR:							
<p>THESE DRAWINGS AND SPECIFICATIONS SHALL BE THE PROPERTY OF SHENZHEN CHANGYUE TECHNOLOGY CO., LTD. ANY REPRODUCTION OR USE IN ANY MANNER WITHOUT THE WRITTEN PERMISSION OF SHENZHEN CHANGYUE TECHNOLOGY CO., LTD.</p>														

at small positioning hole of the carrier tape side).
 標簽黏貼處 (朝捲裝包材的小定位孔一側)
 Location of label sticking (label)



- NOTE:**
1. 每捲包裝數量及每箱裝箱數量如左下表格。
Packing qty of each reel & carton as below table shown.
 2. 以上膠帶覆蓋下包裝帶經包裝機熱熔包裝
Use cover tape to cover and hot melt machine to seal up.
 3. 每個紙箱放2個珍珠棉
Every carton use 2pcs EPE.
 4. 將裝滿產品的卷盤放入紙箱并以膠帶封口
Put reels in the carton and use adhesive tape to seal up.

包裝容量 (PACKING CAPACITY)		重量 (Kg)		
PCS/REEL	REEL/SCARTON	PCS/CARTON	N.W./BOX	G.W./BOX
1000	8	8000		

XX	±0.10	.XX° ± 0.5°	UNITS	TITLE:
X	±0.50	X° ± 2°	mm	深圳市创粤科技有限公司 TYPE-C 24P沉板DIP+SMT母座 L=10.0MM
X	±0.30	X° ± 1°		
.XXX	± 0.05			
THESE DIMENSIONS AND SPECIFICATIONS ARE THE PROPERTY OF SHENZHEN CHUANGYUE TECHNOLOGY CO.,LTD. AND SHALL NOT BE REPRODUCED, COPIED OR USED IN ANY MANNER WITHOUT THE WRITTEN PERMISSION OF SHENZHEN CHUANGYUE TECHNOLOGY CO., LTD.				FINISH: / Q'TY: / DR: /
DWG NO.:				SCALE: 1/1
				SHEET: 1/1
				REV: A1

REV.	ZONE	DESCRIPTION	DESIGN	DATE
B		NEW		