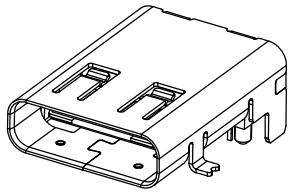
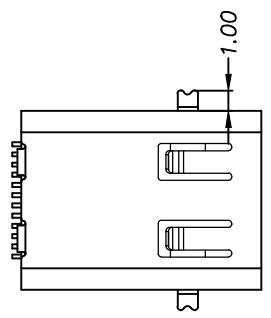
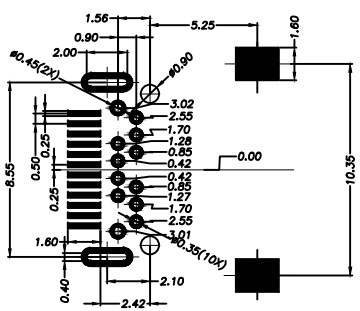
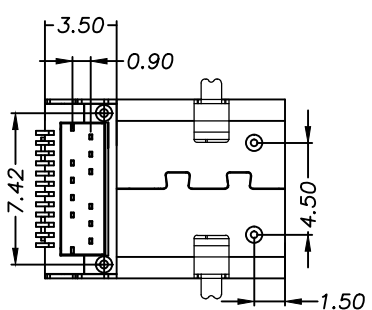
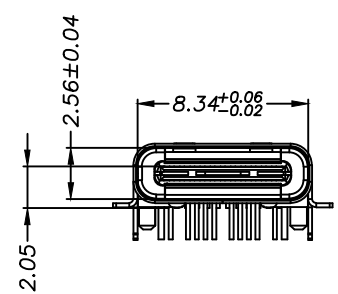
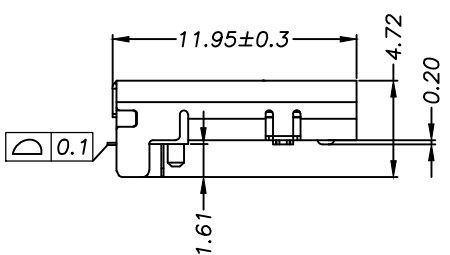
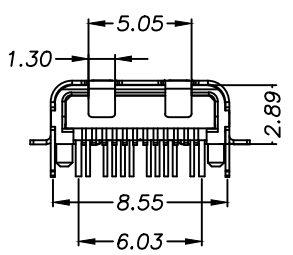


REV.	ECN. NO.	APPD.



备注:
 1.材质:
 1.1胶芯: LCP+30%G.F UL94V-0
 1.2端子: 磷铜, T=0.12mm; 镍底, 镀金Xμ”
 1.3外壳: 不锈钢, T=0.30mm; 表面镀镍100μ”
 或亮锡100μ”
 1.4接地片: 不锈钢, T=0.10mm;
 1.5卡片: 不锈钢, T=0.15mm;
 2.主要特性:
 2.1额定电流: 0.5A
 2.2接触阻抗: 30mΩ MAX
 2.3绝缘阻抗: 100MΩ MIN 250V DC
 2.4耐压测试: 250V AC
 2.5沾锡性: 温度250±5℃, 时间5±0.5s
 2.6整体插入力: 3.57kgf MAX
 整体拔出力: 1.02kgf MIN
 2.7使用寿命: 10000次
 2.8工作温度: -30℃~+80℃



RECOMMENDED PCB LAYOUT(TOP VIEW)

X. ±0.50	X.* ± 2°	UNITS	深圳市创粤科技有限公司		
.X ±0.30	.X* ± 1°	mm	TITLE:		
.XX ±0.10	.XX* ± 0.5°	MAT'L	TYPE C 24PIN 前贴后插11.95MM		
.XXX ± 0.05					
THESE DRAWINGS AND SPECIFICATIONS ARE THE PROPERTY OF CHUANGYUE TECHNOLOGY CO.,LTD. AND SHALL NOT BE REPRODUCED, COPIED OR USED IN ANY MANNER WITHOUT THE PRIOR WRITTEN CONSENT OF CHUANGYUE TECHNOLOGY CO., LTD			FINISH	APPD: 陈俊杰	DWG NO.:
			Q'TY	CHKD: 陈志南	CY-STF1-24PC-1195
				DR: 林德成	SCALE SHEET REV.
					1/1 1/1 A1