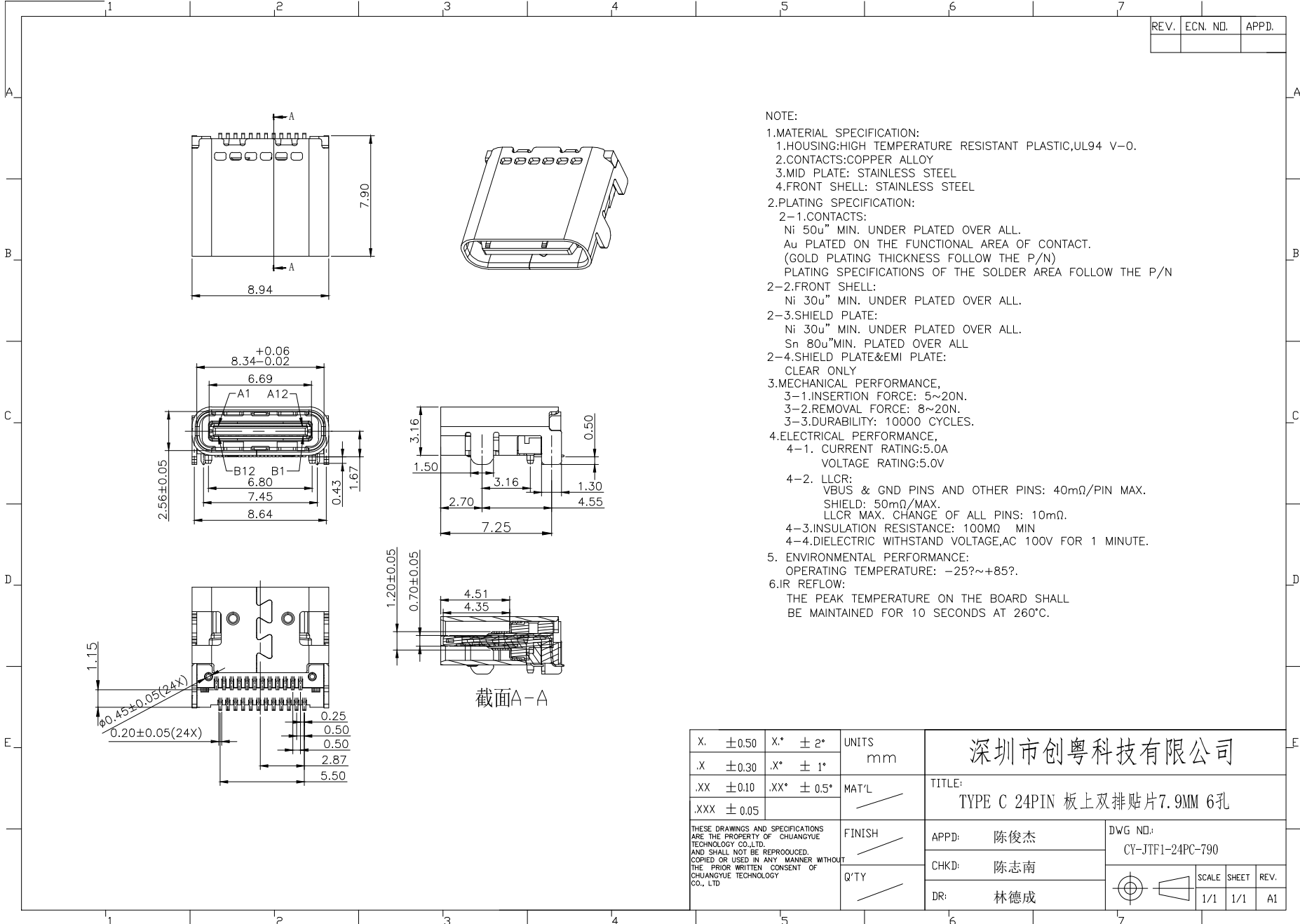


REV.	ECN. NO.	APPD.



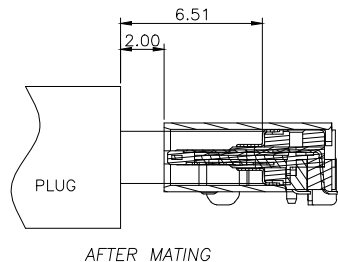
NOTE:

- MATERIAL SPECIFICATION:
 - HOUSING: HIGH TEMPERATURE RESISTANT PLASTIC, UL94 V-0.
 - CONTACTS: COPPER ALLOY
 - MID PLATE: STAINLESS STEEL
 - FRONT SHELL: STAINLESS STEEL
- PLATING SPECIFICATION:
 - CONTACTS:
 - Ni 50u" MIN. UNDER PLATED OVER ALL.
 - Au PLATED ON THE FUNCTIONAL AREA OF CONTACT.
 - (GOLD PLATING THICKNESS FOLLOW THE P/N)
 - PLATING SPECIFICATIONS OF THE SOLDER AREA FOLLOW THE P/N
 - FRONT SHELL:
 - Ni 30u" MIN. UNDER PLATED OVER ALL.
 - SHIELD PLATE:
 - Ni 30u" MIN. UNDER PLATED OVER ALL.
 - Sn 80u" MIN. PLATED OVER ALL
 - SHIELD PLATE & EMI PLATE:
 - CLEAR ONLY
- MECHANICAL PERFORMANCE,
 - INSERTION FORCE: 5~20N.
 - REMOVAL FORCE: 8~20N.
 - DURABILITY: 10000 CYCLES.
- ELECTRICAL PERFORMANCE,
 - CURRENT RATING: 5.0A
VOLTAGE RATING: 5.0V
 - LLCR:
 - VBUS & GND PINS AND OTHER PINS: 40mΩ/PIN MAX.
 - SHIELD: 50mΩ/MAX.
 - LLCR MAX. CHANGE OF ALL PINS: 10mΩ.
 - INSULATION RESISTANCE: 100MΩ MIN
 - DIELECTRIC WITHSTAND VOLTAGE, AC 100V FOR 1 MINUTE.
- ENVIRONMENTAL PERFORMANCE:
 - OPERATING TEMPERATURE: -25°~+85°.
- IR REFLOW:
 - THE PEAK TEMPERATURE ON THE BOARD SHALL BE MAINTAINED FOR 10 SECONDS AT 260°C.

截面A-A

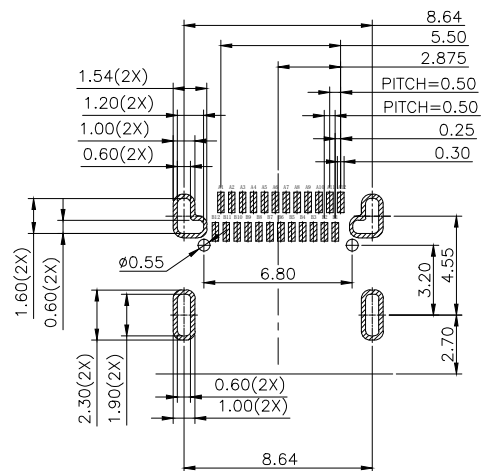
X. ±0.50	X* ±2°	UNITS	深圳市创粤科技有限公司			
.X ±0.30	.X* ±1°	mm				
.XX ±0.10	.XX* ±0.5°	MAT'L	TITLE:			
.XXX ±0.05			TYPE C 24PIN 板上双排贴片7.9MM 6孔			
THESE DRAWINGS AND SPECIFICATIONS ARE THE PROPERTY OF CHUANGYUE TECHNOLOGY CO.,LTD. AND SHALL NOT BE REPRODUCED, COPIED OR USED IN ANY MANNER WITHOUT THE PRIOR WRITTEN CONSENT OF CHUANGYUE TECHNOLOGY CO., LTD.			FINISH	APPD: 陈俊杰	DWG NO.:	
			Q'TY	CHKD: 陈志南	CY-JTF1-24PC-790	
				DR: 林德成	SCALE	SHEET
				1/1	1/1	A1

REV.	ECN. NO.	APPD.



USB TYPE-C PIN ASSIGNMENTS

PIN NUMBER	SIGNAL NAME	PIN NUMBER	SIGNAL NAME
A1	GND	B12	GND
A2	SSTXp1	B11	SSRXp1
A3	SSTXn1	B10	SSRXn1
A4	Vbus	B9	Vbus
A5	CC1	B8	SBU2
A6	Dp1	B7	Dn2
A7	Dn1	B6	Dp2
A8	SBU1	B5	CC2
A9	Vbus	B4	Vbus
A10	SSRXn2	B3	SSTXn2
A11	SSRXp2	B2	SSTXp2
A12	GND	B1	GND



RECOMMENDED PCB LAYOUT(TOP VIEW)
THICKNESS 0.60MM;DEFAULT TOLERANCE:±0.05

X.	±0.50	X.*	± 2°	UNITS	mm
.X	±0.30	.X*	± 1°		
.XX	±0.10	.XX*	± 0.5°	MAT'L	/
.XXX	± 0.05				

深圳市创粤科技有限公司
TITLE:
TYPE C 24PIN 板上双排贴片7.9MM 6孔

THESE DRAWINGS AND SPECIFICATIONS ARE THE PROPERTY OF CHUANGYUE TECHNOLOGY CO.,LTD. AND SHALL NOT BE REPRODUCED, COPIED OR USED IN ANY MANNER WITHOUT THE PRIOR WRITTEN CONSENT OF CHUANGYUE TECHNOLOGY CO., LTD.

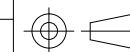
FINISH
/

Q'TY
/

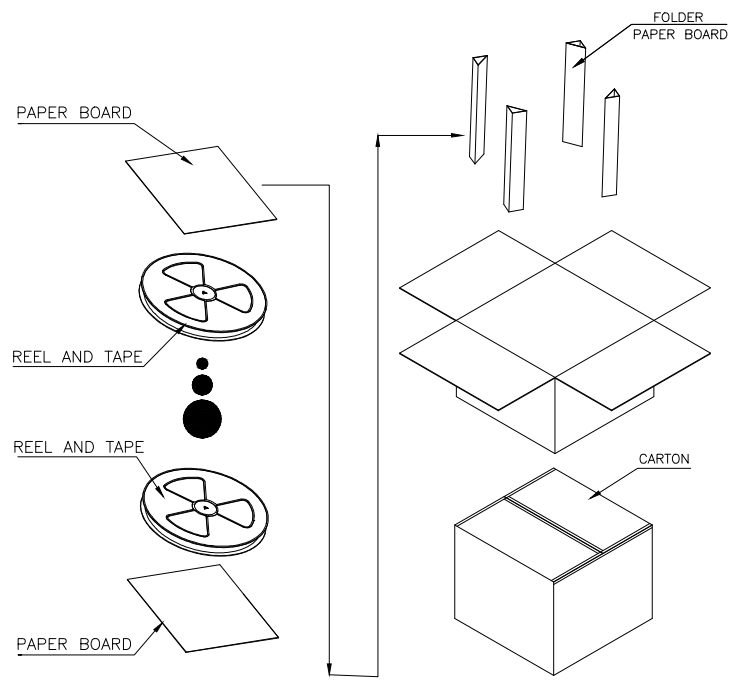
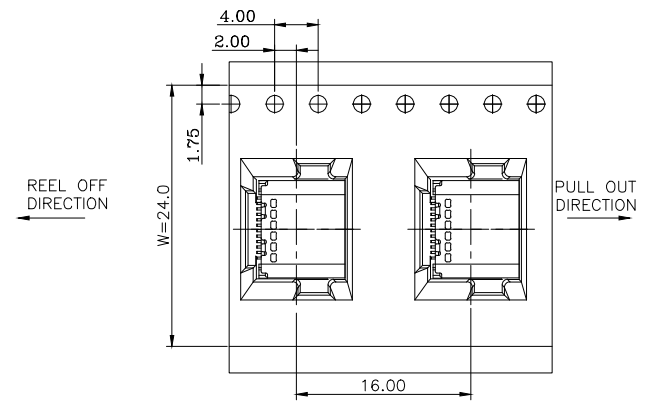
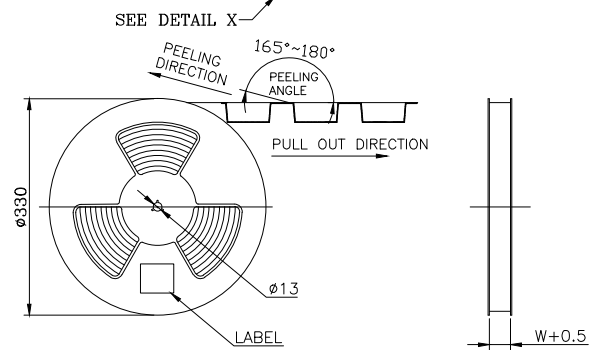
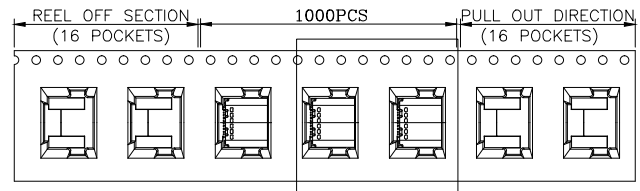
APPD: 陈俊杰
CHKD: 陈志南
DR: 林德成

DWG NO.:
CY-JTF1-24PC-790

SCALE	SHEET	REV.
1/1	1/1	A1



REV.	ECN. NO.	APPD.



	REEL	CARTON
CONNECTOR (PCS)	1000	10000

X.	± 0.50	X.*	$\pm 2^{\circ}$	UNITS	mm
.X	± 0.30	.X*	$\pm 1^{\circ}$	MAT'L	/
.XX	± 0.10	.XX*	$\pm 0.5^{\circ}$	FINISH	/
.XXX	± 0.05			Q'TY	/

深圳市创粤科技有限公司

TITLE: TYPE C 24PIN 板上双排贴片7.9MM 6孔 包装图

APPD: 陈俊杰

CHKD: 陈志南

DR: 林德成

DWG NO.: CY-JTF1-24PC-790

SCALE	SHEET	REV.
1/1	1/1	A1

THESE DRAWINGS AND SPECIFICATIONS ARE THE PROPERTY OF CHUANGYUE TECHNOLOGY CO.,LTD. AND SHALL NOT BE REPRODUCED, COPIED OR USED IN ANY MANNER WITHOUT THE PRIOR WRITTEN CONSENT OF CHUANGYUE TECHNOLOGY CO., LTD.