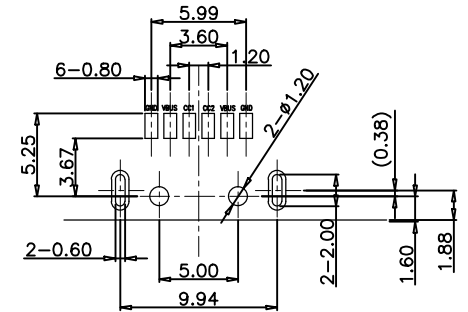
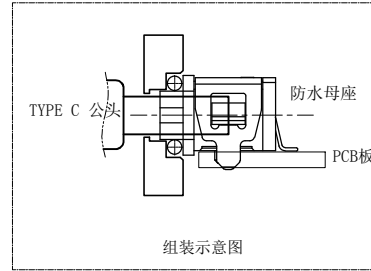
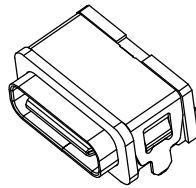
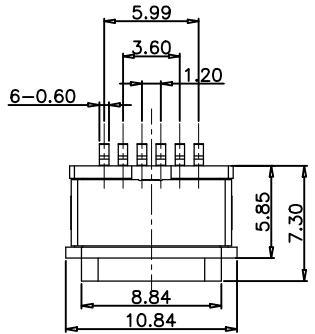




RoHS Compliant

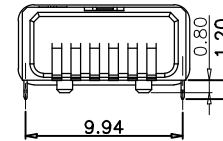
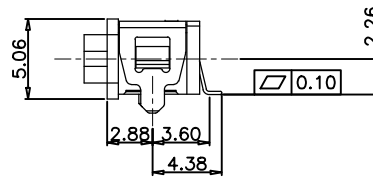
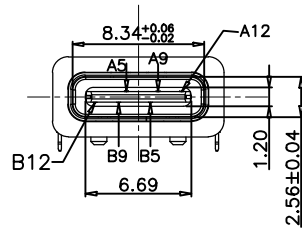
REV.	ZONE	DESCRIPTION	DESIGN	DATE
B		NEW		

CAD GENERATED DRAWING. DON'T CHANGE BY HAND.



RECOMMENDED PCB LAYOUT(TOP VIEW)

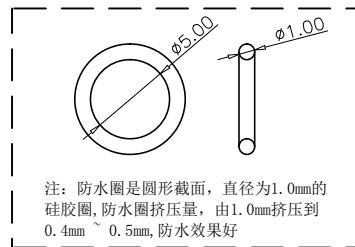
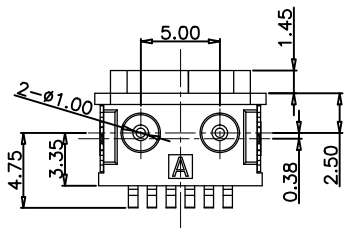
THICKNESS T=1.0mm  
DEFAULT TOLERANCE+/-0.05



NOTES:  
SPECIFICATION:

- CURRENT RATING: 3.0A MAX
- DIELECTRIC WITHSTAND VOLTAGE: 100VAC
- TEMPERATURE RANGE: -30 °C ~ 85 °C
- CONTACT RESISTANCE: 40 MILLIONHM MAX
- INSULATION RESISTANCE: 100 MEGOHMS MIN.
- INSERTION FORCE : 5N~20N
- UNMATING FORCE: 8N~20N
- DURABILITY:5000 CYCLES

30 Min/1.5m  
**IP-X8**



A5	CC1	B12	GND
A9	VBUS	B9	VBUS
A12	GND	B5	CC2
PIN	SIGNAL NAME	PIN	SIGNAL NAME

ITEM	PART NAME	Q'TY	FINISH	NOTE
5	Shell2	1	SUS301 Ni Plating T=0.20mm	Ni:40~120u"
4	Shell1	1	SUS301 Ni Plating T=0.25mm	Ni:40~120u"
3	Housing2	1	LCP(G.F30%)	
2	Contact	5	Phosphor bronze C5210R-EH Au/Ni Plating T=0.20mm	Ni:40~160u" Au:CONTACT AREA:3u" OTHER AREA:G/F
1	Housing	1	PA9T (G.F30%)	

X.	±0.50	X.*	± 2°	UNITS	mm
.X	±0.30	.X*	± 1°		
.XX	±0.10	.XX*	± 0.5°	MAT'L	/
.XXX	±0.05				
				FINISH	/
				Q'TY	

深圳市创粤科技有限公司

TITLE:  
USB 3.1type-c 6p 板上防水6P两脚

APPD:	
CHKD:	
DR:	

DWG NO:	CY-HTFI-6C-730		
SCALE	SHEET	REV.	
1/1	1/1	A1	